



COUNTRYSIDE ESTATES

205 HIGH ROAD • BENFLEET • ESSEX • SS7 5HY

TEL: 01268 755555 EMAIL: benfleet@countrysideestates.co.uk

www.countrysideestates.co.uk



Flat 6 Wisteria Court, 186 Rayleigh Road, Thundersley, Essex, SS7 3YP

£245,000 Leasehold

An extremely spacious two bedroom first floor apartment located in this small block adjacent to Virgin Active and BACKING PLAYING FIELDS, therefore enjoying lovely views especially from the Juliet balcony of the 23ft Lounge/Diner. Luxury re-fitted shower room, separate fully fitted kitchen and two fitted bedrooms. REALISTICALLY PRICED TO EFFECT A QUICK SALE .EXCELLENT CONDITION THROUGHOUT.

Flat 6 Wisteria Court, 186 Rayleigh Road, Thundersley, Essex, SS7 3YP

Communal Entrance Hall

Security door to communal entrance hall with staircase to 1st floor with access to apartment.

Entrance Hall 18'10 x 7'7 red 3'3 (5.74m x 2.31m red 0.99m)



A lovely sized entrance hall, built in cupboard housing pressurised hot water tank, radiator, skimmed ceiling with inset ceiling lights, power points.

Lounge/Diner 23'4 x 11 (7.11m x 3.35m)



A lovely bright and spacious double aspect room having french doors to the rear with Juliet balcony enjoying views over playing fields, window to flank in dining area, skimmed ceiling with inset lights, radiator, glazed double doors to hall.



Kitchen 9'7 x 9'4 (2.92m x 2.84m)



Window to flank, Fitted with good range of base and wall cupboards, range of worktops, inset single drainer stainless steel sink unit, integrated washing machine and dishwasher, electric oven, ceramic hob with extractor hood above, and stainless steel splash back to hob, skimmed ceiling with inset lights, tiled floor.

Bedroom One 13 x 11'5 (3.96m x 3.48m)



Window to rear with pleasant views over the playing fields, radiator, Three double fitted wardrobes, two dressing tables with drawers under and cupboards above, radiator, skimmed ceiling.



Flat 6 Wisteria Court, 186 Rayleigh Road, Thundersley, Essex, SS7 3YP

Bedroom Two 9 x 8'7 (2.74m x 2.62m)

Window to flank, radiator, skimmed ceiling, treble and single wardrobe, fitted over head cupboards with space beneath for bed.

Shower Room 7 x 6'5 (2.13m x 1.96m)



Window to flank, Re-fitted with modern white suite approx two years ago, Double width fully tiled shower cubicle, with over head and hand held shower attachment, close coupled wc with push button control, pedestal wash hand basin with mixer tap and tiled splash-back, skimmed ceiling with inset lights, extractor fan, shaver point, chrome towel radiator.

Communal Gardens



Well maintained communal gardens mainly laid to lawn and backing onto playing fields.

Parking



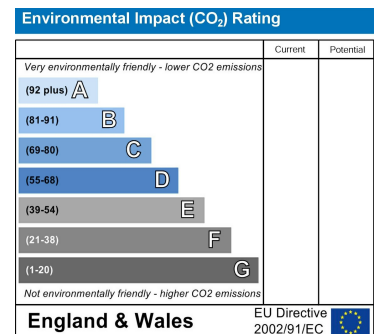
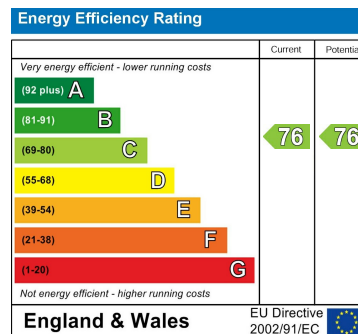
One allocated parking space and visitors parking spaces, the driveway leading to the apartment is approached via remote controlled security gates.

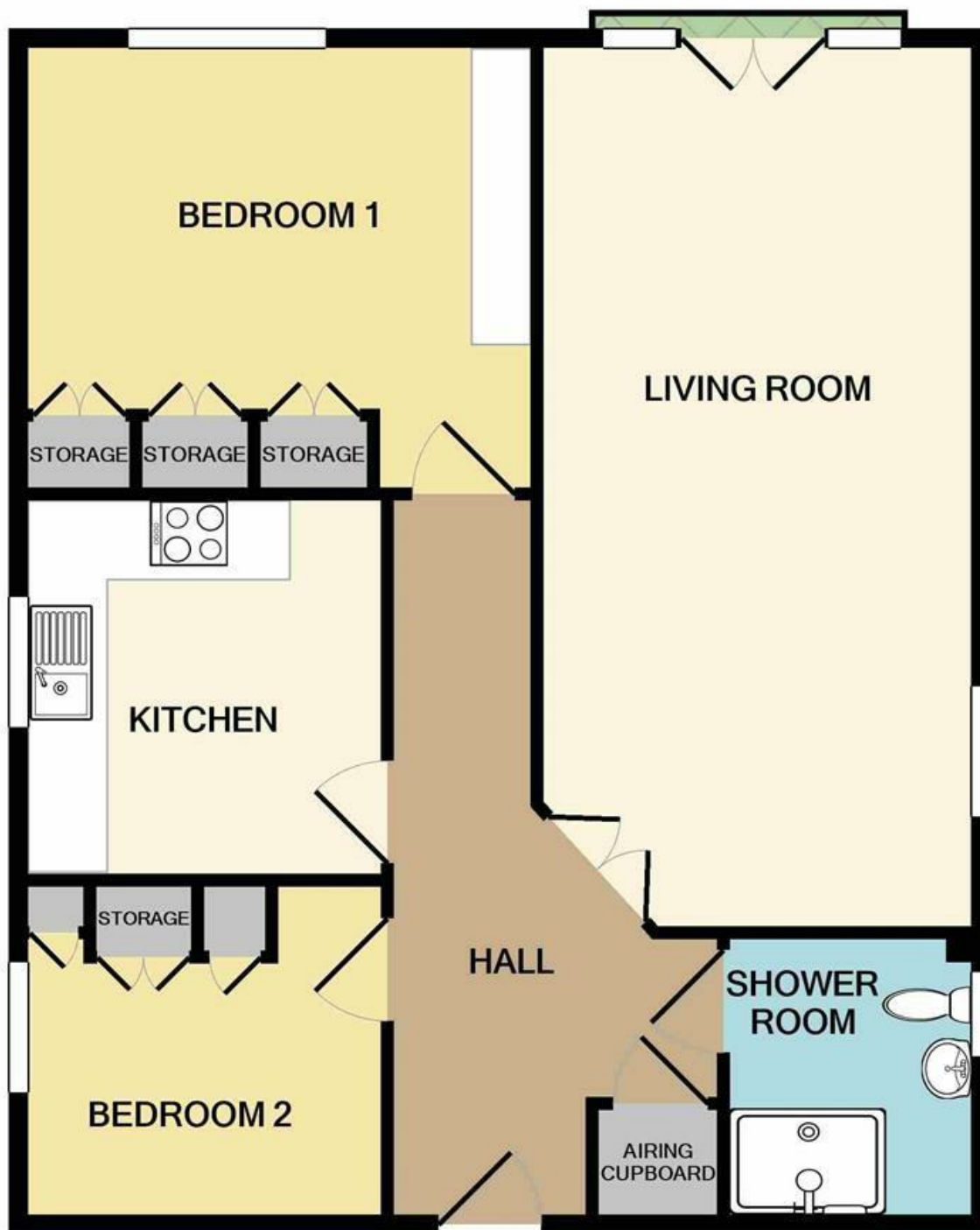
Maintenance

£400 per six months

Ground Rent

£150 per year





TOTAL APPROX. FLOOR AREA 712 SQ.FT. (66.1 SQ.M.)

THIS PLAN IS FOR ROOM IDENTIFICATION ONLY, AND ITS ACCURACY IS NOT GUARANTEED. www.epcsinessex.co.uk
 Made with Metropix ©2020



These particulars do not constitute any part of an offer or contract. Accordingly their accuracy is not guaranteed. Any prospective purchaser or lessee should satisfy themselves to the correctness of statements or information in these particulars.